

# Webcast Instructions

1

- Technical Difficulties? Hang up the call with us, and call TACHC at 512-329-5959 to ask for technical assistance
- Web Etiquette
  - All participants will be muted during the presentation because webcast is recorded.
  - If you have a question or comment, please use the online Q&A Chat Feature. We will field questions as appropriate.
  - We may unmute lines for discussion; if so, **please do not place us on HOLD** or everyone on the webcast will hear your hold music!
- Thank you, we will begin soon!

The Heartbeat of Texas Community Health Centers



TACHC OC<sup>3</sup> CPI Webcast:  
Introduction to the OC<sup>3</sup> CPI Manual  
for the Pennsylvania Association of Community Health  
Centers and its member Health Centers  
Part 2 of 2

*Cecile Carson, Esq.*  
*TACHC Associate General Counsel*

May 12, 2016

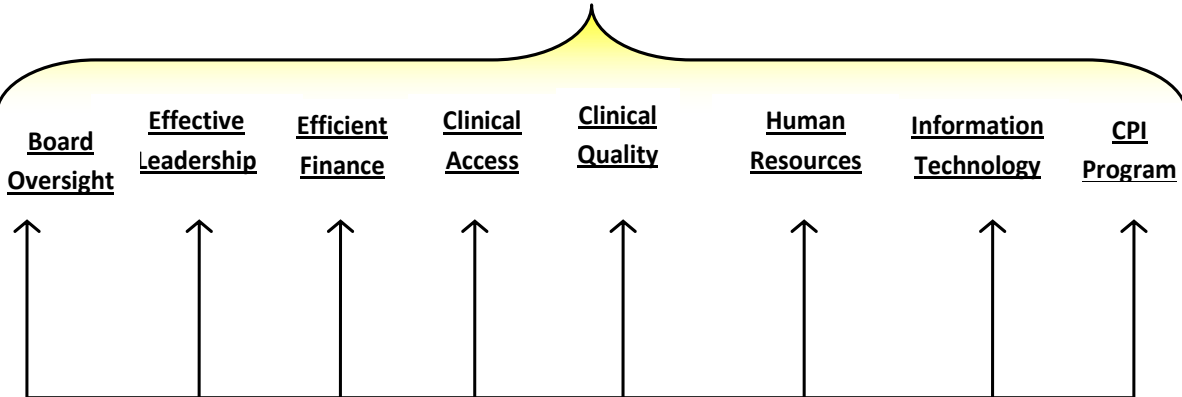
# Objectives for Webcast

3

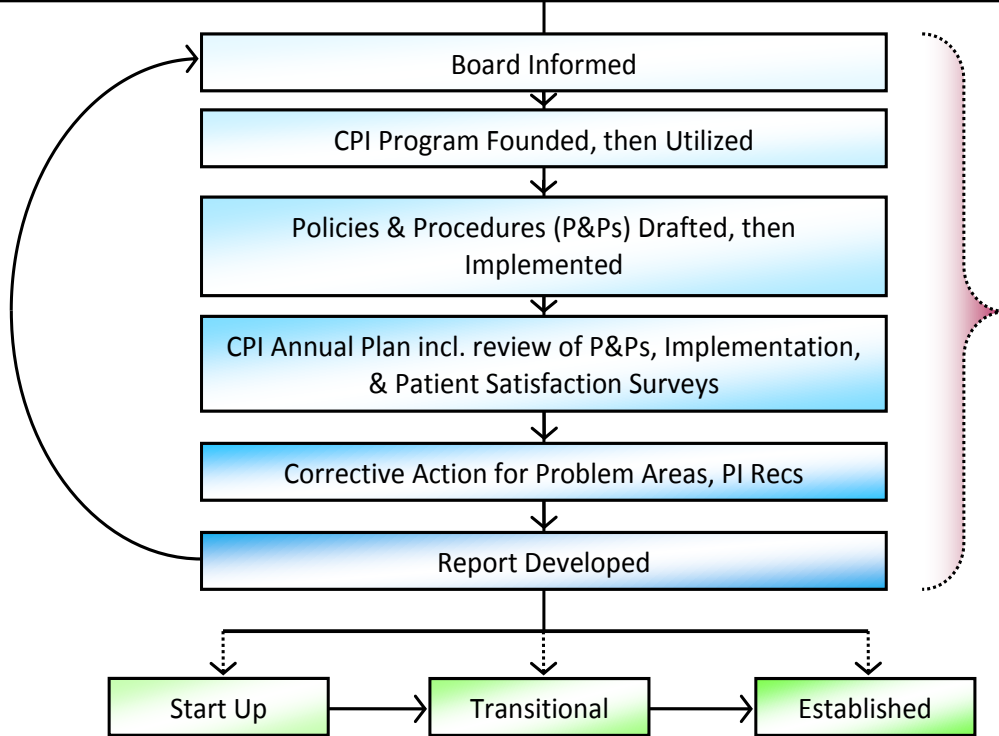
- Share resources from the Clinical Chapter, including PCMH resources
- Highlight Other Popular Manual Resources
- Address Your Questions

# Center OC<sup>3</sup> CPI Structure

Optimizing Comprehensive Clinical Care (OC<sup>3</sup>) Areas

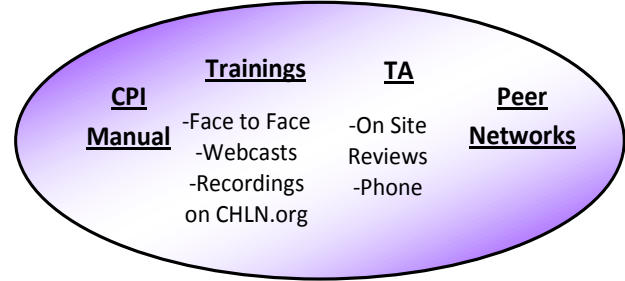


## Center Review Structure

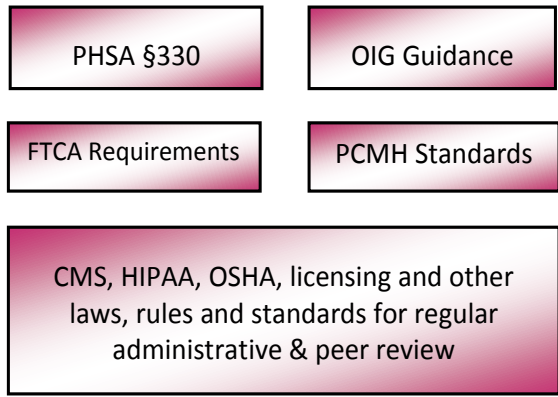


(As compliance is established along with center, center can focus more on PI)

## PCA Structure Supporting Center CPI



CPI Officer oversees compliance, risk management, safety, privacy/security, and performance improvement based on:



# TACHC OC<sup>3</sup> CPI Manual

---

# CONTENT

# Objectives for Webcast

6

- Share resources from the Clinical Chapter, including PCMH resources
- Highlight Other Popular Manual Resources
- Address Your Questions

# Final Questions, Comments?

*Happy Improving!*

*For more information:*

*Visit [www.TACHC.org](http://www.TACHC.org)*

*Contact us at (512) 329-5959*

*TACHC 33 years and counting!*